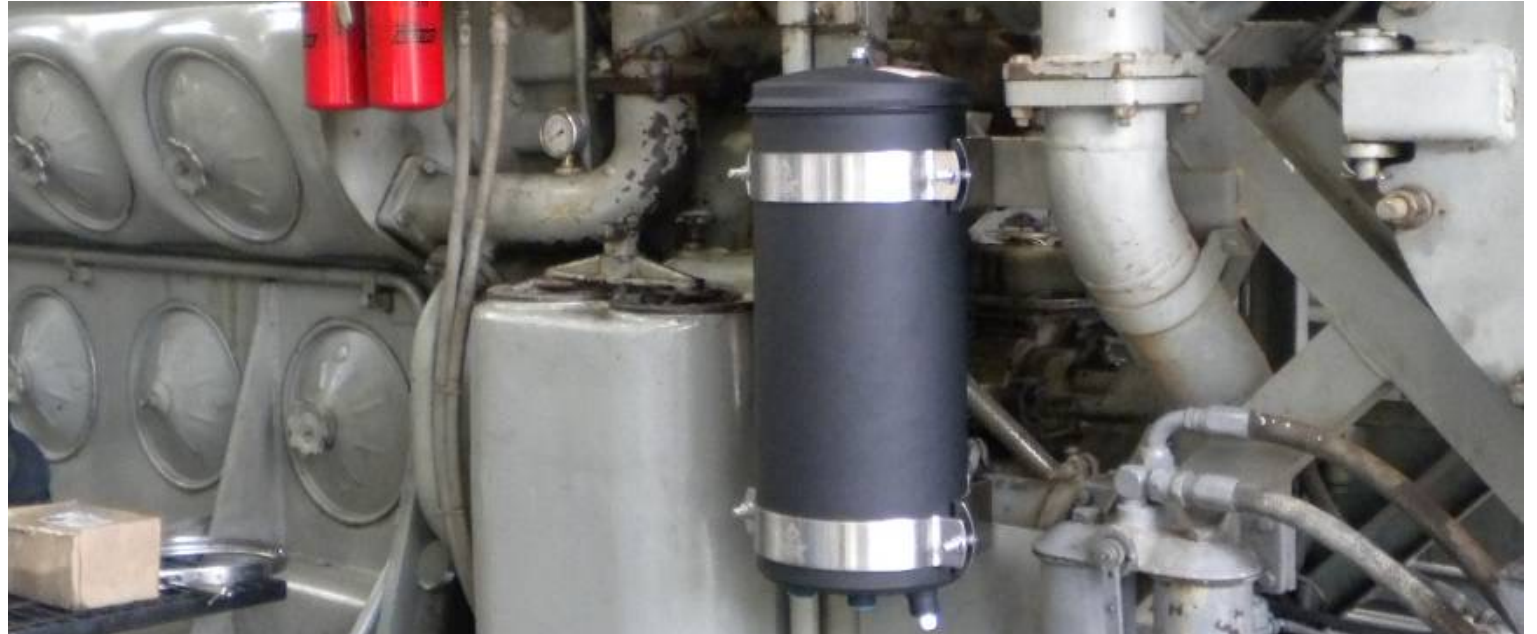


CASE STUDY INSTALLING A WATER FILTER FOR THE COOLING CIRCUIT OF A GENERAL ENGINE 2.5 MW GENERATOR

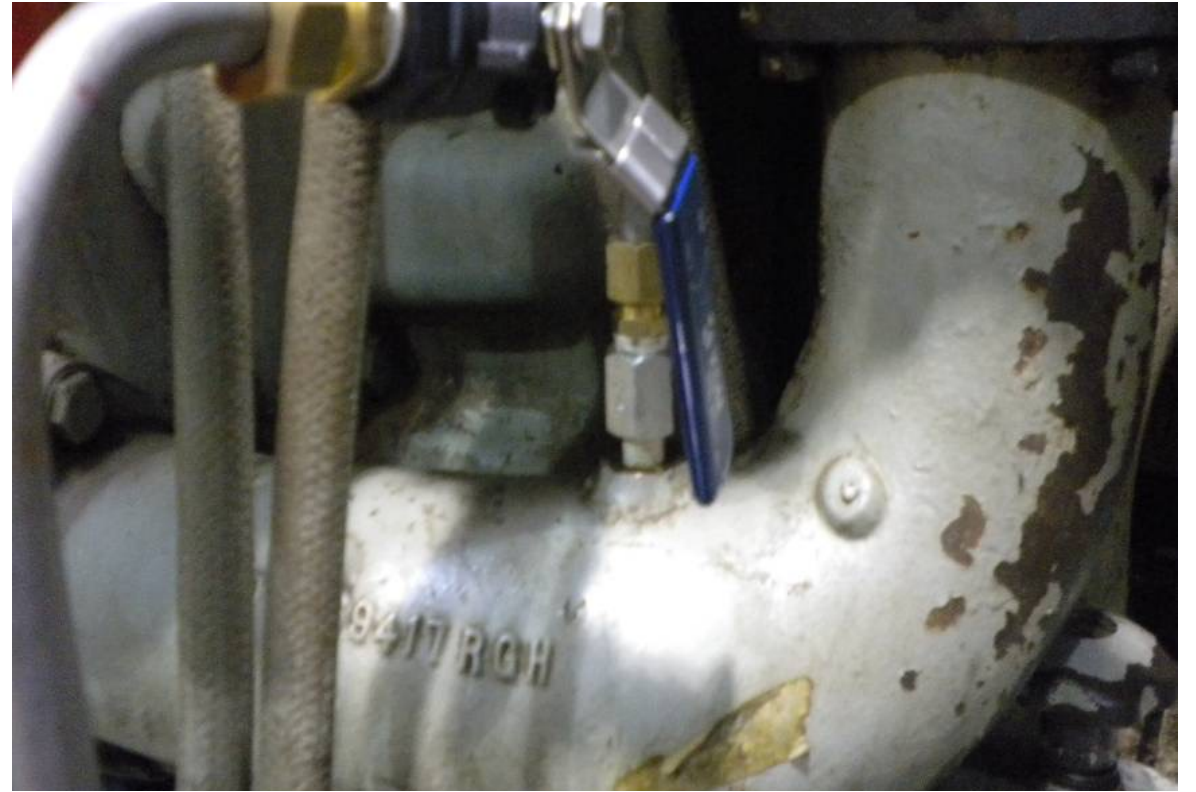
This is a first-generation product case study. Currently testing second generation with a charged polarity source that should greatly enhance the filtering process.



INSTALLING A WATER FILTER FOR
THE COOLING CIRCUIT OF THE
GENERAL ENGINE 2.5 MW MODEL



The WATER filter unit is installed on the external structure of the GENERAL MOTORS engine. Installation takes approximately 4 hours.



**Water outlet to the
filter, discharge side
of the pump.**



Return of the filtered water to
the suction side of the pump

RESULTS

Engine 3 unfiltered cooling circuit water



Water from the engine cooling circuit at the filter outlet, 1 single pass.

