

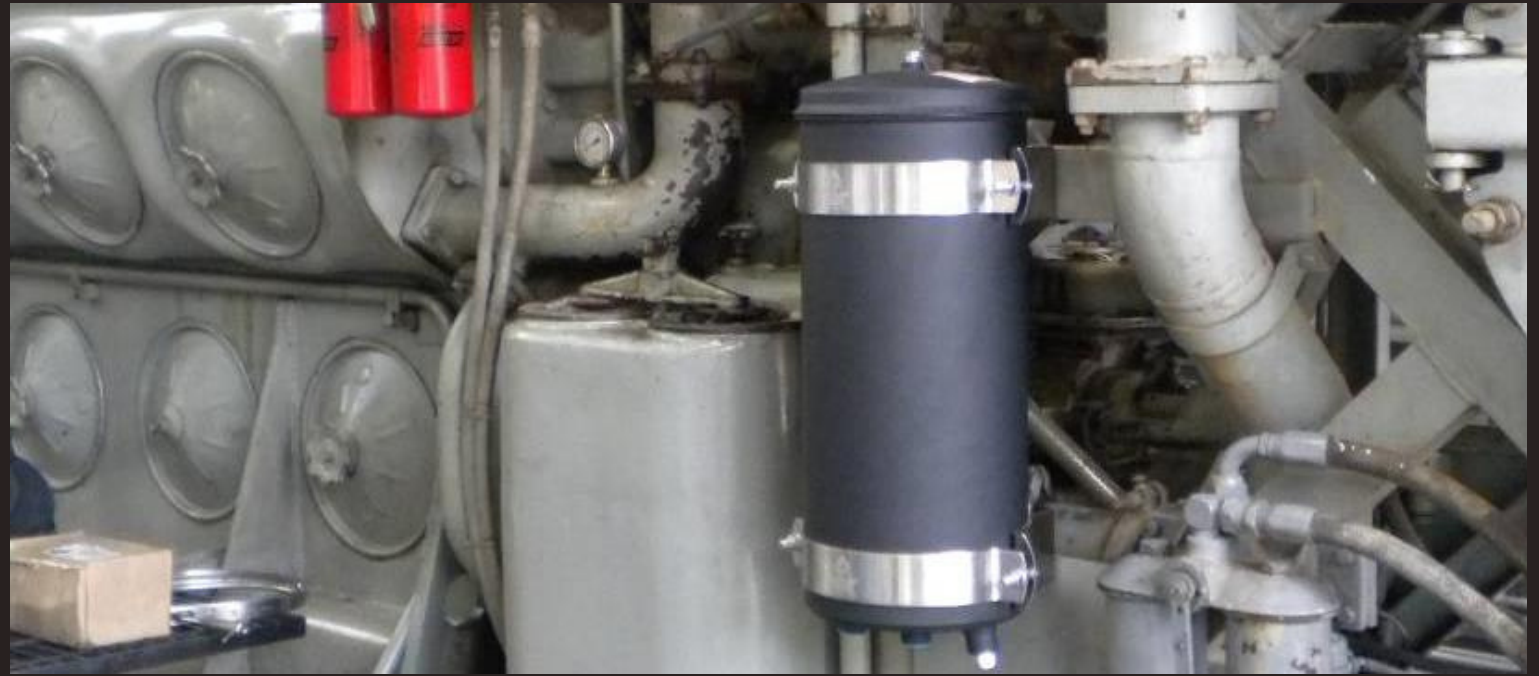
CASE STUDY INSTALLING A WATER FILTER FOR THE COOLING CIRCUIT OF A GENERAL ENGINE 2.5 MW GENERATOR

This is a first-generation product case study. Currently testing second generation with a charged polarity source that should greatly enhance the filtering process.

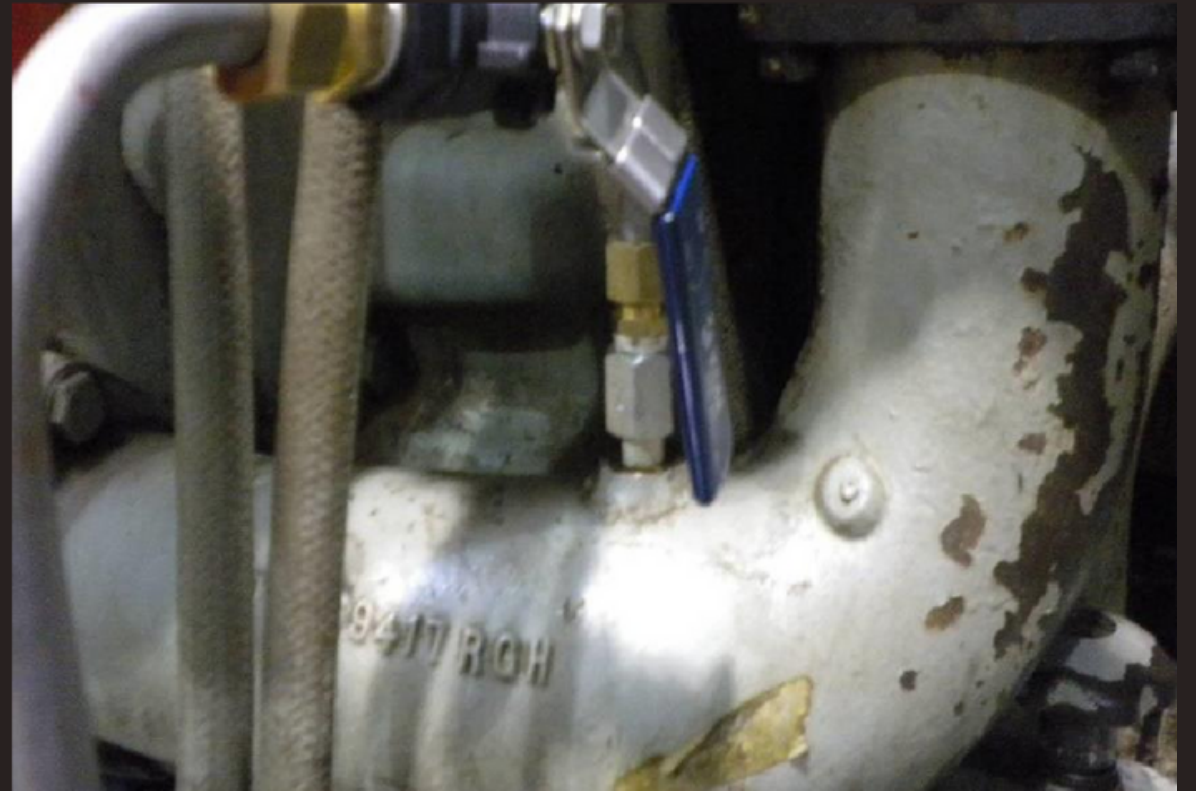




Installing a water filter on the cooling circuit of the general engine 2.5 MW model



The water filter unit is installed on the structure of the engine of the general motor. Installation external takes approximately 4 hours.



Water outlet to the filter,
discharge side of the pump.



Return of the filtered water to
the suction side of the pump

Before and After Results

Engine 3 unfiltered cooling
circuit water



Water from the engine cooling circuit at
the filter outlet, 1 single pass.

